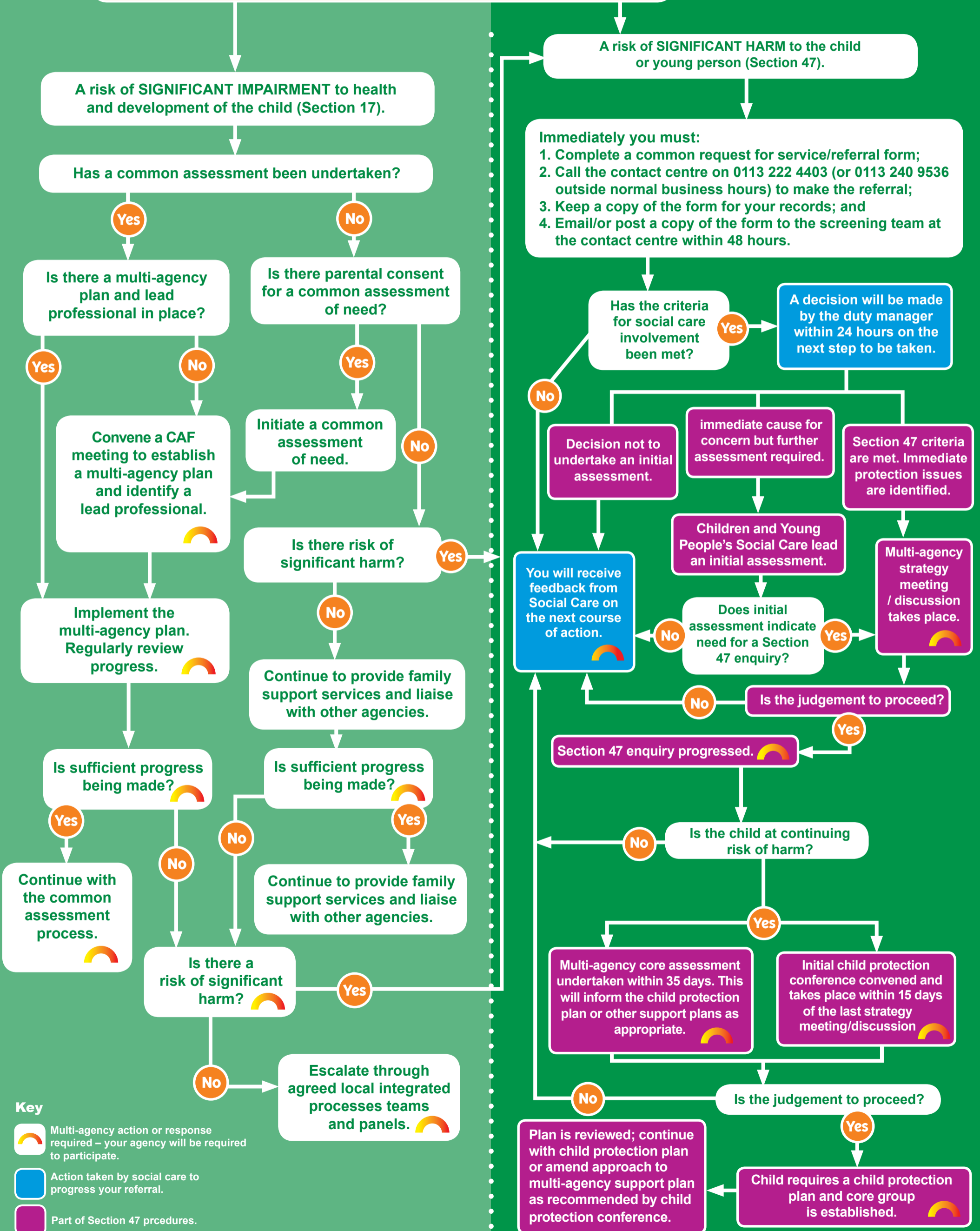


The request for service or referral pathways flowchart

Children Leeds

Start here

If you have a concern about a child or young person talk to your line manager and/or contact the designated child protection lead. Your local contact is [] telephone []
They will work with you to determine if there is:



- Key**
- Multi-agency action or response required – your agency will be required to participate.
 - Action taken by social care to progress your referral.
 - Part of Section 47 procedures.