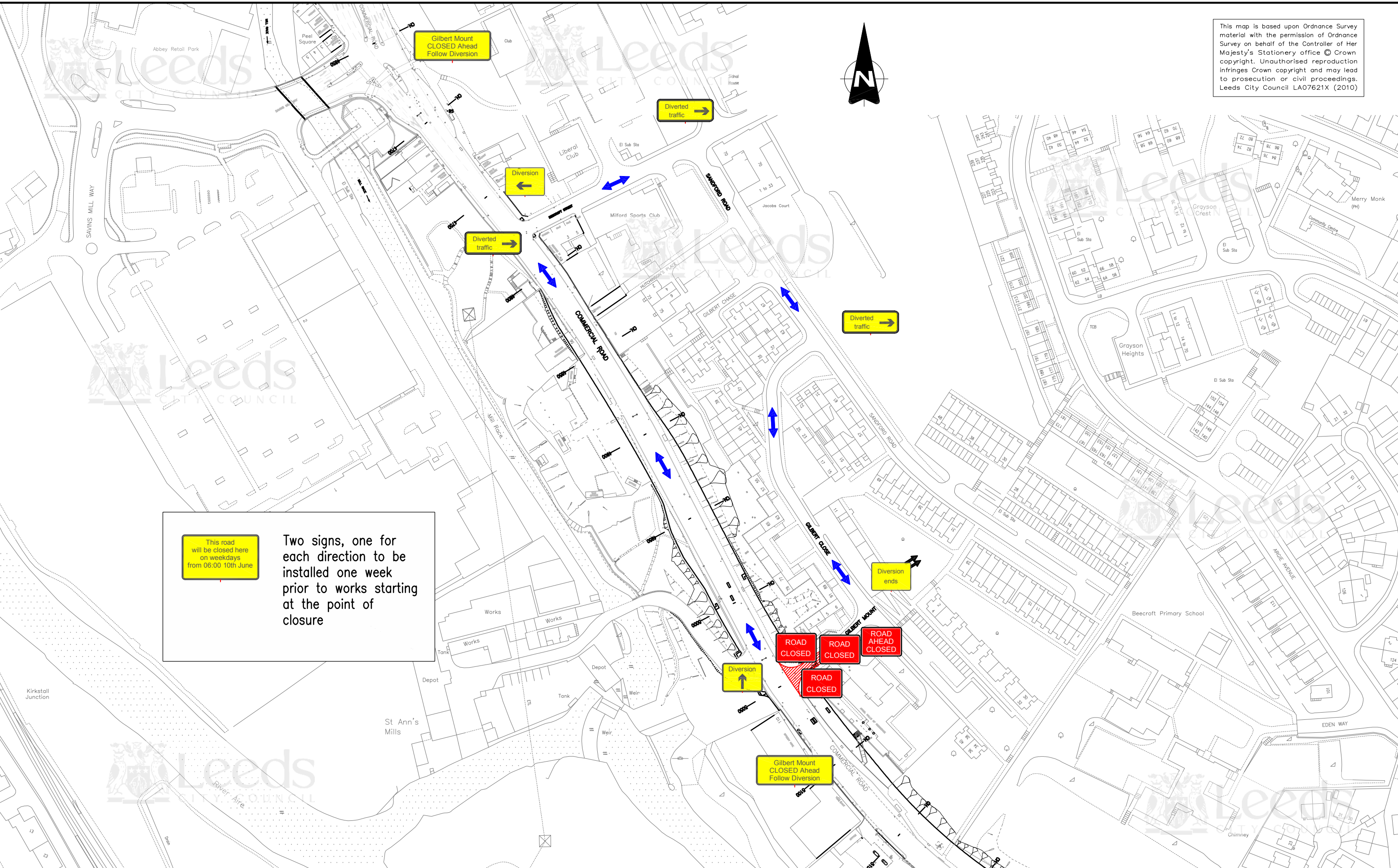


This map is based upon Ordnance Survey material with the permission of Ordnance Survey on behalf of the Controller of Her Majesty's Stationery Office © Crown copyright. Unauthorised reproduction infringes Crown copyright and may lead to prosecution or civil proceedings. Leeds City Council LA07621X (2010)



This road will be closed here on weekdays from 06:00 10th June

Two signs, one for each direction to be installed one week prior to works starting at the point of closure

Rev.	Date	Description	Drawn	Chkd

Drawn:	Date:	Scale:
	20/05/2010	A3 NTS
Designer:	Checked:	
J M Boswell		
Status:		

Title:	
A65 Quality Bus Initiative	
Gilbert Mount extents of closure and diversion route	
Drawing No:	Revision:
C0807 - TM - SK - 043	



carillion

Carillion Engineering Services
 4 Lindrick Way
 Barlborough Links
 Chesterfield S43 4XE

Tel: +44 (0)1246 575300
 Fax: +44 (0)1246 575389